



**COMBINED EMERGENCY MANAGEMENT  
ARRANGEMENTS**

**FOR**

**THE CITY OF PERTH & THE BOTANIC GARDEN &  
PARKS AUTHORITY**

**PART THREE**

**HAZARD & EVENT RESPONSE PLANS**

## CONTENTS

1. Introduction .....	3
2. Hazard Management Agency (HMA) .....	3
3. Response Plans .....	3
4. Event Plans .....	3
5. The Australasian Inter-Service Incident Management System (AIIMS).....	3
6. Incident Management Team (IMT) .....	4
6.1. Graduated Response Structure .....	5
6.2. Support Agency Liaison .....	6
7. Annex A – Hazard Response Plan Summaries.....	6
7.1. Air Crash Response Plan Summary .....	7
7.2. Earthquake Response Plan Summary .....	7
7.3. Human Pandemic Response Plan Summary .....	8
7.4. Road Accident Response Plan Summary .....	8
7.5. Structural Fire Response Plan Summary .....	9
7.6. Terrorist Response Plan Summary .....	9
7.7. Structural Collapse Response Plan Summary .....	10
7.8. Bushfire Response Plan Summary .....	10
7.9. Rail Accident Response Plan Summary .....	11
7.10. Severe Weather Response Plan Summary .....	11
7.11. Low Level Hazard Response Plan Summary .....	11
8. Annex B – Special Event Response Plan Summaries .....	12
8.1. Skyworks Response Plan Summary .....	12
8.2. Air Race Response Plan Summary.....	12
8.3. Christmas Pageant Response Plan Summary .....	13
8.4. Gay Pride Parade Response Plan Summary .....	13

## **1. Introduction**

Part One of these Local Emergency Management Arrangements set out the general provisions of the Emergency Management Act 2005 (the Act). Part Two provides the Emergency Risk Management assessment for identified hazards facing the City of Perth and their *Prevention (Mitigation) and Preparedness* (Treatment Options).

In this, Part Three, the *Response* Arrangements for the identified Hazards are addressed, with particular emphasis on the *Response*, and interface with the City's arrangements for support.

## **2. Hazard Management Agency (HMA)**

The responsibility for the preparation of the *Response* Plans for identified Hazards lies with the Hazard Management Agency (HMA). These are listed in Part One together with the Hazards which have been assigned to them by the State Emergency Management Committee (SEMC), the Act or the particular Agency's establishment Legislation.

## **3. Response Plans**

Hazard Plans are prepared at State Level, District Level and Local Level. The State level WESTPLAN provide the overall assignment of responsibility for HMAs, Combat Agencies and Support Agencies. The detailed *Response* Plans are produced at District and Local Level, based on the WESTPLAN, provided the Risk Assessment for the area indicates the need. Within the City of Perth, there are a number of *Response* Plans documented or under preparation by the relevant HMAs. The provisions of these Metropolitan HMA Response Plans are summarized at Annex A.

## **4. Event Plans**

The Special Events have documented Plans, prepared by either the Event Organiser or the City of Perth. In all cases, the WA Police, Emergency Services and other Support Agencies have been part of the Planning process. A summary of these Event Response Plans is at Annex B.

## **5. The Australasian Inter-Service Incident Management System (AIIMS)**

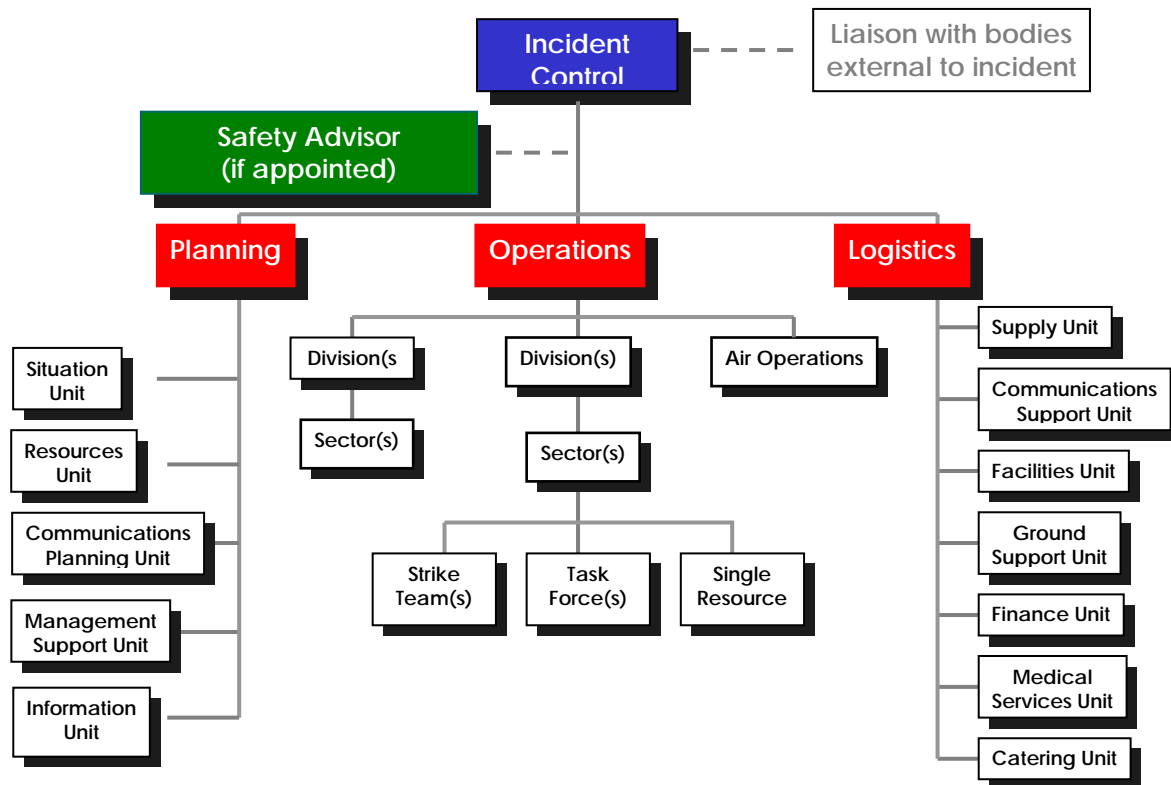
AIIMS was introduced in the early 1990's and has now been adopted by all emergency services as the operational system employed during incidents. The system has significant attributes, which can be summarized as follows:

1. A common operational structure.
2. Clearly defined roles within the structure.
3. Common terminology.
4. Common training competencies.

In addition, AIIMS provides the flexibility for a graduated response, allowing for small incidents requiring one Incident Controller, with the ability to expand the structure if the incident escalates. The core of the system is the Incident Management Team (IMT).

## 6. Incident Management Team (IMT)

In the event of an emergency, the Hazard Management Agency (HMA) will establish an IMT appropriate to the scale and needs of the incident. The full structure is shown below.

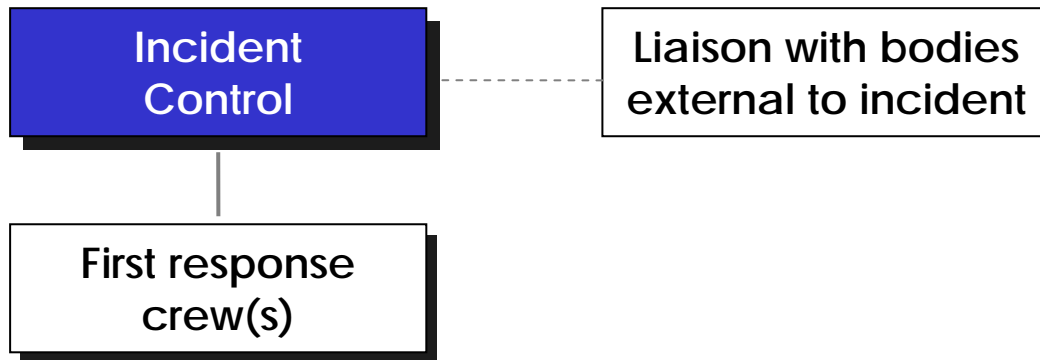


It should be noted that members of the IMT may be drawn from different organisations. However, the Incident Controller (IC) is appointed by the HMA. The IMT may be located at the HMA Emergency Operations Centre (EOC) or Field Headquarters.

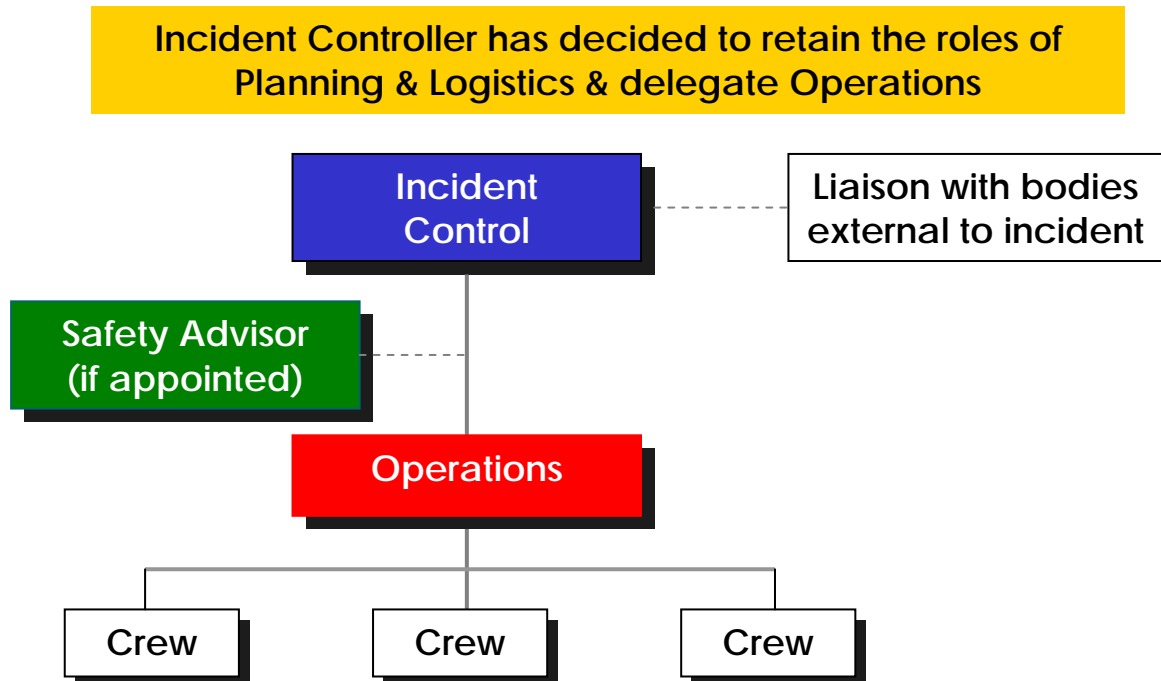
### 6.1. *Graduated Response Structure*

The Structure above is capable of being tailored to suit the magnitude of the response. AIIMS provides for an initial establishment of a single IC, progressively building to the full structure if the incident escalates from a level 1 to a level 3 incident. The following diagrams illustrate this process.

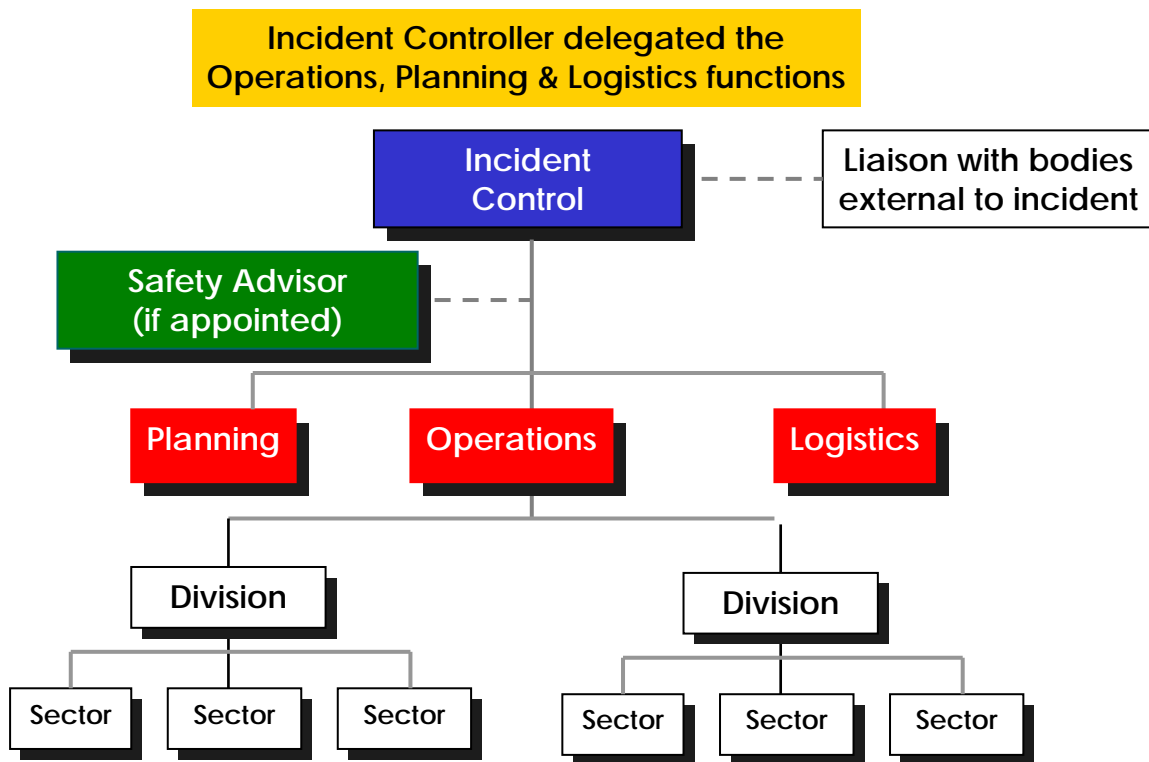
Level 1



Level 2



### Level 3



#### **6.2. Support Agency Liaison**

As shown above, the IMT structure makes provision for external Support Agencies (including Local Government) to be present at the IMT operational site. This may be achieved by use of a Liaison Officer or by establishing a secure communications link to the Support Agency Headquarters.

In certain circumstances, the nature of the incident will require “on site” safety measures, for which purpose a Safety Officer will be established on site to ensure appropriate safety procedures, including Personal Protective Equipment (PPE), are complied with.

### **7. Annex A – Hazard Response Plan Summaries**

Individual Hazard Response Plans are summarized in the following tables.

### **7.1. Air Crash Response Plan Summary**

<b>RESPONSE DETAILS</b>	<b>POSITION AGENCY</b>	<b>REFERENCE</b>
HMA	WA Police	
State Plan	WESTPLAN AIRCRASH	<a href="#">Aircrash 2005</a>
Regional / District Plan	Perth Airport Plan Jandakot Airport Plan	
Incident Controller/Manager	Nominated WA Police Officer	
Emergency Coordinator	Central Metropolitan District Officer.	
Response EOC	Police Operations Centre	
Field Command Post	Yes near the scene of Incident	
CoP/KP Incident Manager	CoP Coordinator Safety & Security	
CoP/KP ECC	8 <sup>th</sup> Floor Council House	
Liaison Officer	Yes, nominated Senior Ranger	

### **7.2. Earthquake Response Plan Summary**

<b>RESPONSE DETAILS</b>	<b>POSITION AGENCY</b>	<b>REFERENCE</b>
HMA	FESA SES	
State Plan	WESTPLAN EARTHQUAKE	<a href="#">Earthquake</a> Under review.
Regional / District Plan	Under development	
Incident Controller/Manager	FESA Metropolitan Operations	
Emergency Coordinator	Central Metropolitan District Officer	
Response EOC	FESA Operations Hay St. Perth	
Field Command Post	No	
CoP/KP Incident Manager	CoP Coordinator Safety & Security	
CoP/KP ECC	8 <sup>th</sup> Floor Council House	
Liaison Officer	Yes, Nominated Senior Ranger	

### **7.3. Human Pandemic Response Plan Summary**

<b>RESPONSE DETAILS</b>	<b>POSITION AGENCY</b>	<b>REFERENCE</b>
HMA	Health Department	
State Plan	Human Epidemic	<a href="#">Human Epidemic</a>
Regional / District Plan	Under development	
Incident Controller/Manager	State Health Controller	
Emergency Coordinator	Central Metropolitan District Officer	
Response EOC	Grace Vaughan House 227 Stubbs Tce. Shenton.Park	
Field Command Post	Nil	
CoP/KP Incident Manager	CoP Coordinator Safety & Security	
CoP/KP ECC	8 <sup>th</sup> Floor Council House	
Liaison Officer	Yes, City Health Dept.	

### **7.4. Road Accident Response Plan Summary**

<b>RESPONSE DETAILS</b>	<b>POSITION AGENCY</b>	<b>REFERENCE</b>
HMA	WA Police	
State Plan	WESTPLAN Traffic Crash.	<a href="#">Traffic Crash</a>
Regional / District Plan	District Plans & SOP's	
Incident Controller/Manager	Nominated Police Officer	
Emergency Coordinator	Central Metropolitan District Officer	
Response EOC	Police Operations Centre	
Field Command Post	Yes, near scene of incident.	
CoP/KP Incident Manager	CoP Coordinator Safety & Security	
CoP/KP ECC	8 <sup>th</sup> Floor Council House	
Liaison Officer	Yes, City Ranger	

### **7.5. Structural Fire Response Plan Summary**

<b>RESPONSE DETAILS</b>	<b>POSITION AGENCY</b>	<b>REFERENCE</b>
HMA	FESA Fire Services	
State Plan	Urban Fire	Under development
Regional / District Plan	Standing Procedures	
Incident Controller/Manager	FESA District Officer	
Emergency Coordinator	Central Metropolitan District Officer	
Response EOC	FESA Operations Centre	
Field Command Post	Yes	
CoP/KP Incident Manager	CoP Coordinator Safety & Security	
CoP/KP ECC	8 <sup>th</sup> Floor Council House	
Liaison Officer	Yes, City Ranger	

### **7.6. Terrorist Response Plan Summary**

<b>RESPONSE DETAILS</b>	<b>POSITION AGENCY</b>	<b>REFERENCE</b>
HMA	WA Police	
State Plan	Counter Terrorism	Restricted Document
Regional / District Plan	Escalates to State level	
Incident Controller/Manager	Nominated WA Police Officer	
Emergency Coordinator	Commissioner Of Police	
Response EOC	Restricted	
Field Command Post	Restricted	
CoP/KP Incident Manager	CoP Coordinator Safety & Security	
CoP/KP ECC	8 <sup>th</sup> Floor Council House	
Liaison Officer	No	

### **7.7. Structural Collapse Response Plan Summary**

<b>RESPONSE DETAILS</b>	<b>POSITION AGENCY</b>	<b>REFERENCE</b>
HMA	FESA Fire Services	
State Plan	Under development	Under development
Regional / District Plan	Standing Procedures	
Incident Controller/Manager	FESA District Officer	
Emergency Coordinator	Central Metropolitan District Officer	
Response EOC	FESA Operations	
Field Command Post	Yes	
CoP/KP Incident Manager	CoP Coordinator Safety & Security	
CoP/KP ECC	8 <sup>th</sup> Floor Council House	
Liaison Officer	Yes City Ranger	

### **7.8. Bushfire Response Plan Summary**

<b>RESPONSE DETAILS</b>	<b>POSITION AGENCY</b>	<b>REFERENCE</b>
HMA	FESA Fire Services	
State Plan	WESTPLAN Bushfire	<a href="#">Bushfire 2005</a>
Regional / District Plan	Kings Park Bushfire Plan	
Incident Controller/Manager	FESA District Officer	
Emergency Coordinator	Central Metropolitan District Officer	
Response EOC	FESA Operations	
Field Command Post	Yes	
CoP/KP Incident Manager	CoP Coordinator Safety & Security	
CoP/KP ECC	8 <sup>th</sup> Floor Council House	
Liaison Officer	YES Kings Park Fire Management Officer	

### **7.9. Rail Accident Response Plan Summary**

<b>RESPONSE DETAILS</b>	<b>POSITION AGENCY</b>	<b>REFERENCE</b>
HMA	Westrail	
State Plan	Nil	
Regional / District Plan	Nil	
Incident Controller/Manager	WA Police / Transperth Control	
Emergency Coordinator	Central Metropolitan District Officer	
Response EOC	Camera Monitoring Room, Perth Train Station.	
Field Command Post	Yes, near scene of incident	
CoP/KP Incident Manager	CoP Coordinator Safety & Security	
CoP/KP ECC	8 <sup>th</sup> Floor Council House	
Liaison Officer	Yes City Ranger	

### **7.10. Severe Weather Response Plan Summary**

<b>RESPONSE DETAILS</b>	<b>POSITION AGENCY</b>	<b>REFERENCE</b>
HMA	FESA SES	
State Plan	WESTPLAN STORM	<a href="#">Storm</a>
Regional / District Plan	Nil	
Incident Controller/Manager	FESA District Officer	
Emergency Coordinator	Central Metropolitan District Officer	
Response EOC	FESA SES Operations	
Field Command Post	No	
CoP/KP Incident Manager	CoP Coordinator Safety & Security	
CoP/KP ECC	8 <sup>th</sup> Floor Council House	
Liaison Officer	No	

### **7.11. Low Level Hazard Response Plan Summary**

The listed Hazards assessed as LOW Risk, included:

1. Marine Accident
2. Infrastructure Failure
3. Hazardous Material Incident
4. Landslide (Rock Fall)
5. Flooding

Where as these may occur, specific Response Plans will not be addressed for the CoP/KP. However, the arrangements detailed in this plan will be activated should this be required.

## **8. Annex B – Special Event Response Plan Summaries**

Special Event Response Plans are summarized in the following sub-paragraphs.

### **8.1. Skyworks Response Plan Summary**

<b>RESPONSE DETAILS</b>	<b>POSITION AGENCY</b>	<b>REFERENCE</b>
HMA	WA Police / LGAs	
State Plan	Nil	
Regional / District Plan	Skyworks Plan	
Incident Controller/Manager	COP	
Emergency Coordinator	Nil	
Response EOC	Perth Convention Centre	
Field Command Post	As per plan on river front	
CoP/KP Incident Manager	CoP Coordinator Safety & Security	
CoP/KP ECC	8 <sup>th</sup> Floor Council House	
Liaison Officer	As required	

### **8.2. Air Race Response Plan Summary**

<b>RESPONSE DETAILS</b>	<b>POSITION AGENCY</b>	<b>REFERENCE</b>
HMA	WA Police	
State Plan	Nil	
Regional / District Plan	Red Bull Air Race Plan	
Incident Controller/Manager	COP	
Emergency Coordinator	No	
Response EOC		
Field Command Post	Yes at Langley Park	
CoP/KP Incident Manager	CoP Coordinator Safety & Security	
CoP/KP ECC	8 <sup>th</sup> Floor Council House	
Liaison Officer	As required	

### **8.3. Christmas Pageant Response Plan Summary**

<b>RESPONSE DETAILS</b>	<b>POSITION AGENCY</b>	<b>REFERENCE</b>
HMA	WA Police	
State Plan	Nil	
Regional / District Plan	Christmas Pageant Plan	
Incident Controller/Manager	COP	
Emergency Coordinator	Nil	
Response EOC		
Field Command Post	No	
CoP/KP Incident Manager	CoP Coordinator Safety & Security	
CoP/KP ECC	8 <sup>th</sup> Floor Council House	
Liaison Officer	No	

### **8.4. Gay Pride Parade Response Plan Summary**

<b>RESPONSE DETAILS</b>	<b>POSITION AGENCY</b>	<b>REFERENCE</b>
HMA	WA Police	
State Plan	Nil	
Regional / District Plan	Gay Pride Parade Plan	
Incident Controller/Manager	COP	
Emergency Coordinator	Nil	
Response EOC		
Field Command Post	No	
CoP/KP Incident Manager	CoP Coordinator Safety & Security	
CoP/KP ECC	8 <sup>th</sup> Floor Council House	
Liaison Officer	No	